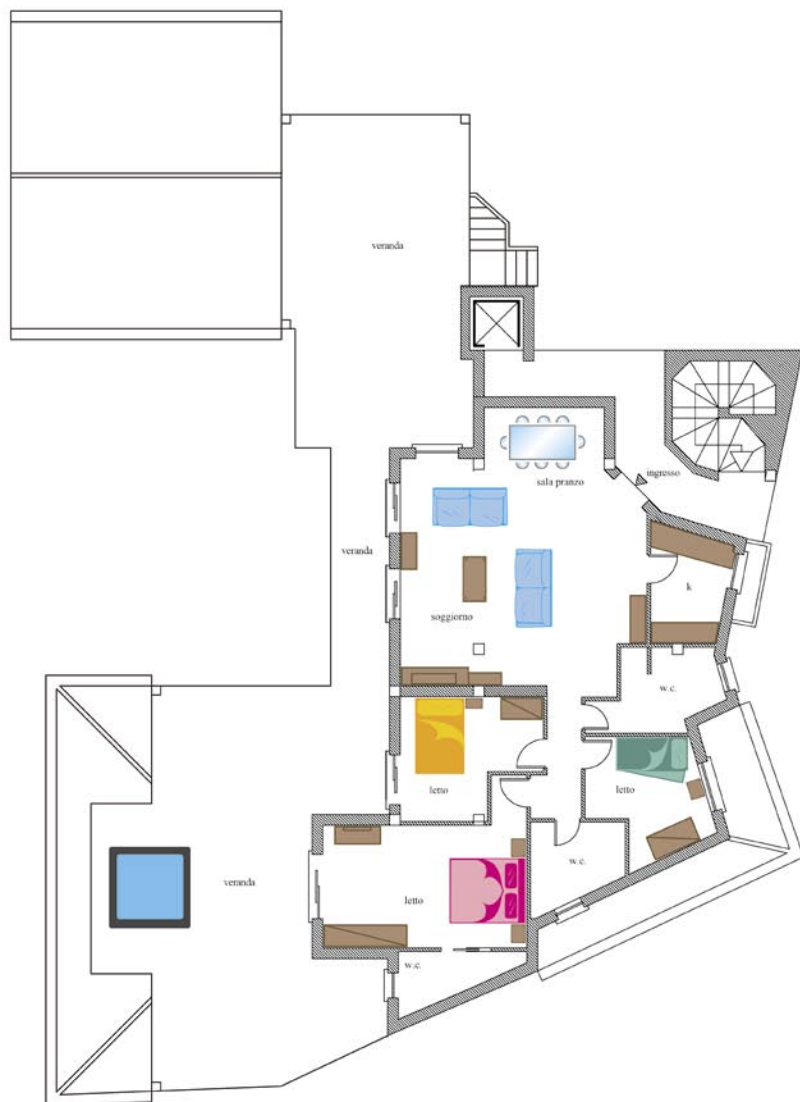


ATTIC ROOM
Second Floor



DESCRIPTION

■ **Entrance**
The entry is through the scale B of Residence. Covered parking with lift access, internal stairs to the upper floors.

■ **Double Room**
White laminate cabinet with 5 doors, 2 bedside tables, double bed, dresser, 2 pillows in hypoallergenic fiber, wrought iron rail complete with canvas tent Sardinia.

■ **Bedroom**
White laminate cabinet with 2 doors, bedside table, queen-size bed, 2 pillows in hypoallergenic fiber, wrought iron rail complete with canvas tent Sardinia.

■ **Bedroom**
White laminate cabinet with 2 doors, bedside table, single upholstered bed "Joy" with 2nd bed, 2 pillows in hypoallergenic fiber, wrought iron rail complete with canvas tent Sardinia.

■ **Number of people**
4-6 people.

■ **Bathroom**
3, equipped with shower (one with a washing machine).

■ **Living Room**
Dining table polished steel structure, 6 chairs "Elisir" padded faux leather White, 2 sofa "Mozart", rectangular coffee table, living room wall, baseboard 2 doors with wall and base library, 2 wrought iron rail complete with canvas tent Sardinia.

■ **Kitchen**
Modular linear, hob, multifunction electric oven, retractable dishwasher washing machine, fridge/freezer.

■ **Veranda**
Terrace with Jacuzzi.

■ **Lighting**
13 ceiling light frosted white glass.

■ **Additional information**
*Air-conditioning system (hot/cold); plants built in Eco-sustainable systems way of hot water tanks located outside.
The floor area of the apartment is a whole of 122.07 sqm + veranda 130.81 sqm.*

