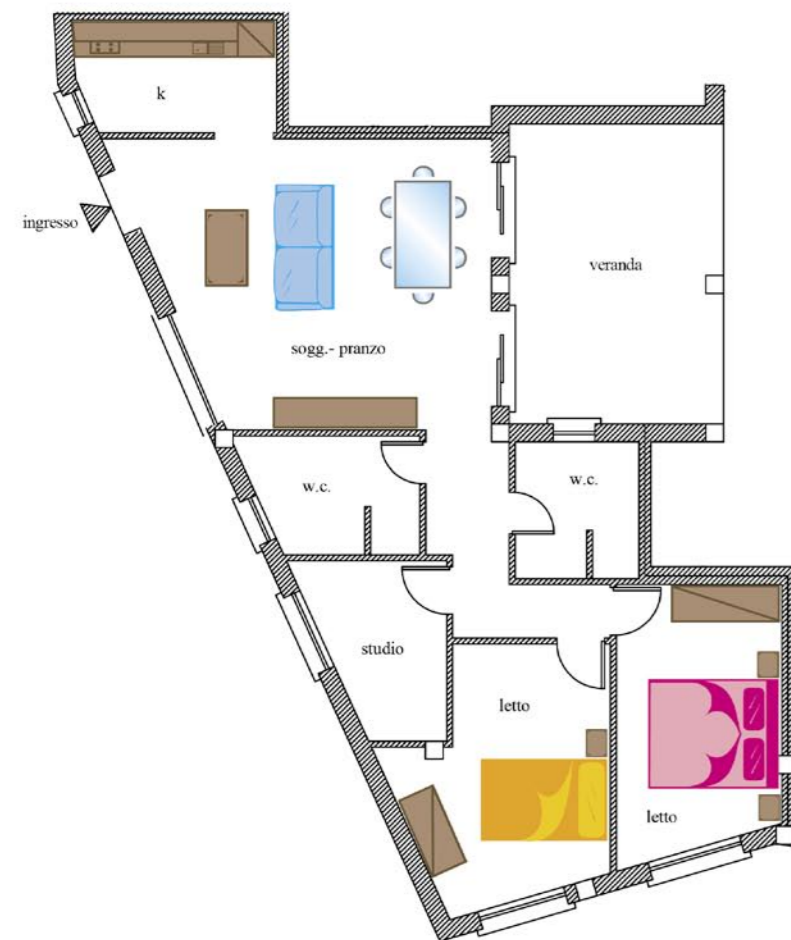


**APARTMENT N. 6**  
*Ground Floor*



**DESCRIPTION**

■ Entrance

*The entry is through the courtyard of the Residence. Covered parking with lift access, internal stairs to the upper floors.*

■ Double Room

*White laminate cabinet with 4 doors, 2 bedside tables, double bed, 2 pillows in hypoallergenic fiber, wrought iron rail complete with canvas tent Sardinia.*

■ Bedroom

*White laminate cabinet with 2 doors, bedside table, queen-size bed, 2 pillows in hypoallergenic fiber, wrought iron rail complete with canvas tent Sardinia.*

■ Number of people

*3-4 people.*

■ Bathroom

*2, equipped with a shower.*

■ Living Room

*Dining table polished steel structure, 6 chairs "Elisir" padded faux leather White, sofa "Mozart", rectangular coffee table, living room wall, base/sideboard 2 doors, 2 wrought iron rail complete with canvas tent Sardinia.*

■ Kitchen

*Modular linear, hob, multifunction electric oven, retractable dishwasher washing machine, fridge/freezer.*

■ Lighting

*10 ceiling light frosted white glass.*

■ Additional information

*Air-conditioning system (hot/cold); plants built in Eco-sustainable systems way of hot water tanks located outside.*

*The floor area of the apartment is a whole of 82.87 sqm + veranda 18.18 sqm.*

