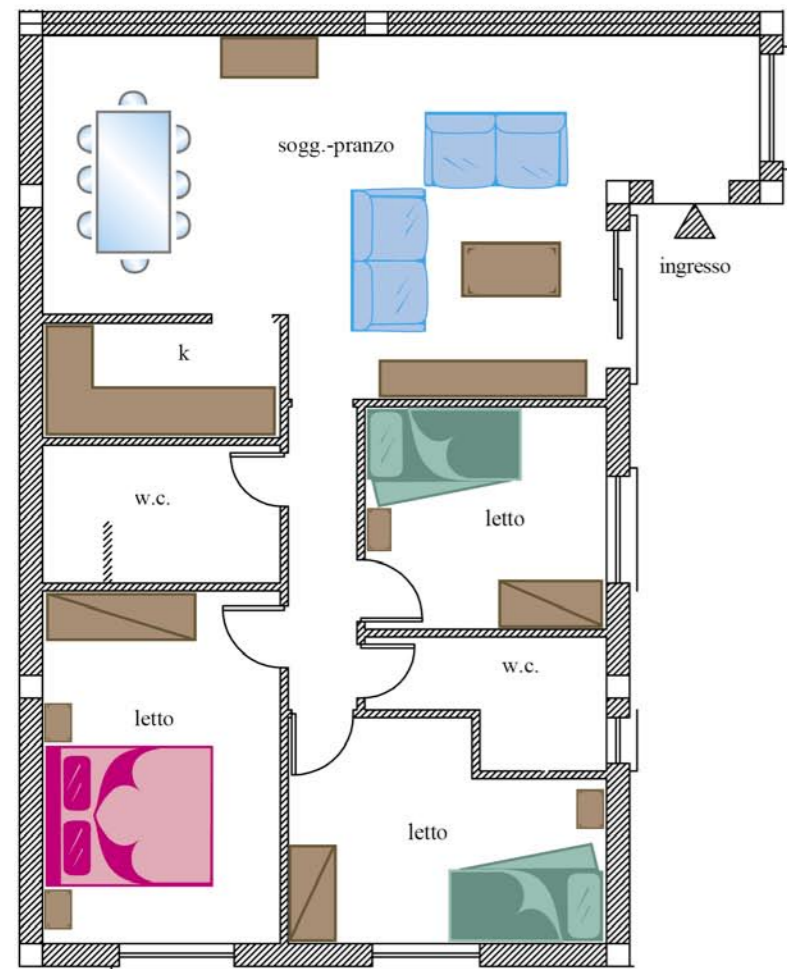


**APARTMENT N. 1**  
**Ground Floor**



**DESCRIPTION**

■ Entrance

The entry is through the courtyard of the Residence. Covered parking with lift access, internal stairs to the upper floors.

■ Double Room

White laminate cabinet with 4 doors, 2 bedside tables, double bed, 2 pillows in hypoallergenic fiber, wrought iron rail complete with canvas tent Sardinia.

■ Bedroom

White laminate cabinet with 3 doors, bedside table, single upholstered bed "Joy" with 2nd bed, 2 pillows in hypoallergenic fiber, wrought iron rail complete with canvas tent Sardinia.

■ Bedroom

White laminate cabinet with 3 doors, bedside table, single upholstered bed "Joy" with 2nd bed, 2 pillows in hypoallergenic fiber, wrought iron rail complete with canvas tent Sardinia.

■ Number of people

4-6 people.

■ Bathroom

2, equipped with a shower.

■ Living Room

Dining table polished steel structure, 6 chairs "Elisi" padded faux leather White, 2 sofa "Mozart", rectangular coffee table, living room wall, baselboard 2 doors, 2 wrought iron rail complete with canvas tent Sardinia.

■ Kitchen

Modular linear, hob, multifunction electric oven, retractable dishwasher washing machine, fridge/freezer.

■ Lighting

10 ceiling light frosted white glass.

■ Additional information

Air-conditioning system (hot/cold); plants built in Eco-sustainable systems way of hot water tanks located outside.

The floor area of the apartment is a whole of 90.90 square meters + terrace 19.90 sqm.

